



THE DEADLY DOGMEN

CONCEPT BY ALTERED VISION STUDIOS



THE DEADLY DOGMEN

concept ALTERED VISION STUDIOS

Director/Producer MIGUEL CANTU

Producer EDDIE HILL

Producer PATRICK NEWCOMB

Producer RENE RODRIGUEZ

Producer LUCIO GONZALEZ

Producer JESUS SIFUENTES

To inquire about our business plan please contact:

Miguel Cantu

210.459.9349

BUDGET

\$3.5 million / 1 season / 16 episodes

GENRE

Thriller/Horror

TV SERIES:

1 hour format

PRODUCTION:

Altered Vision Studios

LOGLINE:

A group of adventurers search for the existence of lycanthropes aka werewolves by investigating eyewitness testimonials and researching documented encounters to validate the claims.



PROJECT SUMMARY

Our team receives reports of dogmen sightings and attacks, discusses claims, collects photos and data, and decides to travel and investigate. Interviews and on site research along with reenactments (cinematic with special effects) will drive the stories. Authorities are involved and questioned for validity. Each investigation concludes with reporting of collected data using miscellaneous technologies.

Altered Vision Studios is seeking \$3.5 million for a season of production. The show will have investigators travel to sighting locations of dogmen to determine report's validity.

Altered Vision Studios will increase production value with special effects to heighten visual impact and impress audiences.

SYNOPSIS

Paranormal investigators Eddie Hill, Patrick Newcomb, and Rene Rodriguez seek out the historical reports of werewolf sightings in modern day Americas. Their search brings them face to face with eyewitnesses and attack survivors who claim to have come in contact with these supernatural beings which have eluded mainstream media for centuries. Their adventures take them across the country as they seek answers to the existence of lycanthropes, possibly coming into contact with these mysterious creatures along the way.





MARKETING

Production will build relationships with various “dens” of lycan social groups and incorporate their rituals, mythology, and lifestyle, while investigating the multiple subspecies of werewolves; dogmen, humanoid, super soliders, skinwalkers, and Werewolf-Vampire hybrids.

There have been multiple sightings of Dogmen ranging from New Orleans, Chicago, Dallas, Virginia, North Carolina, Oregon, North Dakota, and Washington. These will be ideal places to investigate and incorporate our social media advertising.





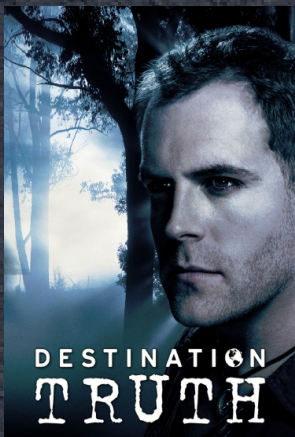
SERIES COMPARABLES



MONSTER QUEST (2007-) History Channel



RIVER MONSTERS (2009-2017) Discovery Channel / Animal Planet



DESTINATION TRUTH (2007-2012) SyFy



EXPEDITION UNKNOWN (2015-) Travel Channel



FINDING BIGFOOT (2011-2018) Animal Planet

PRODUCTION TEAM

MIGUEL CANTU



I have been a fan of disturbing, macabre, and distasteful subject matter in film and art since early childhood growing up with slasher horrors and low brow comedies. My morbid curiosities have manifested themselves into a career as a successful special effects artist and budding filmmaker over the course of 10 years. I have procured a reasonably high reputation as an artist that can produce high quality effects that are both practical and composited in the adaptation of digital film making through the span of my career in the entertainment industry.

EDDIE HILL



Eddie Hill is a retired Police Sergeant who served for over 26 years. Prior to his law enforcement career he served 8 years in the United States Navy Reserves as a Master of Arms. Eddie does consultations as a police instructor, fire arms instructor, defensive tactics, special weapons, hostage negotiations, special investigations. He is also currently the host of Paranormal Analytical and has over 20 years as a paranormal investigator.

PATRICK NEWCOMB



Patrick Newcomb has worked as a EMS paramedic for emergency ambulance for 16 years. Patrick has received certifications from FEMA and the State of Texas as part of a strike team for national disasters. Specializing in hurricanes and floods. He has also done tours in the Middle East including Iraq and Kuwait in wartime as a medic where he trained troops in emergency medicine. Patrick also served as a Firefighter Lieutenant.

JESUS SIFUENTES



Mr. Sifuentes has been in the film industry for over 10 years as a working line producer and ad on feature films, national/ regional commercials and music videos. He has managed crews of 65 plus and has been responsible for hiring, payroll, production insurance, vendor rentals and dealing with SAG & DGA signatory productions. To date Mr. Sifuentes has managed close to \$3,000,000.00 in film production budgets. As a producer he has gotten distribution for four feature films and one documentary.

RENE RODRIGUEZ



Rene Rodriguez is an IT security nerd, providing strategy and skills for the modern business. He has over 20 years of experience in the technology field. His jobs duties are to protect businesses from on-line threats such as hackers, spammers, viruses, network intrusions as well as dangerous end users. Rene spends a lot of his free time researching esoteric subjects. He has spent years researching shamanism, metaphysics and other realities. Rene has witnessed and documented many occult phenomenon.

LUCIO GONZALEZ



Lucio Gonzalez owns and operates JAG Public Safety which has been in business for over 6 years. Lucio is also a board member of the San Antonio Rodeo and recently turned his interests into the entertainment industry, particularly producing.

THE DEADLY DOGMEN



To Inquire please contact us:

Miguel Cantu
210-459-9349
info@alteredvisionstudios.com
www.alteredvisionstudios.com

Mr. Sifuentes
210-980-8173
mistersifuentes@gmail.com
www.mistersifuentes.com